



Measure A Extension

FEBRUARY 15, 2022



2012 PARKS MEASURE A



In 2012, 74% of voters approved a one-quarter of one percent sales tax (County Ordinance 3586) to support parks, open space, and agricultural lands across Marin. In accordance with this law, funds raised by Parks Measure A have been spent on parks and open space, farmland preservation, recreation in Marin's nineteen cities and towns, and land acquisition.

The 2012 Measure A sunsets on March 31, 2022. Today's action will place a measure on the June 7, 2022 ballot for re-implementation. Initial polling shows community support at over 80%.

MEASURE A EXTENSION

MEASURE A FUNDS AT WORK

**MARIN COUNTY
PARKS**
PRESERVATION • RECREATION



**WILDLAND FIRE
PREVENTION**



**PARK MAINTENANCE
AND IMPROVEMENTS**



**TRAIL MAINTENANCE
AND IMPROVEMENTS**

MEASURE A FUNDS AT WORK



EQUITY FOCUSED INITIATIVES

Community Grants, Fee Reductions, Library Pass Program,
Parks Rx, Rocky Graham Park Management

MEASURE A EXTENSION

MEASURE A FUNDS AT WORK

**MARIN COUNTY
PARKS**
PRESERVATION • RECREATION



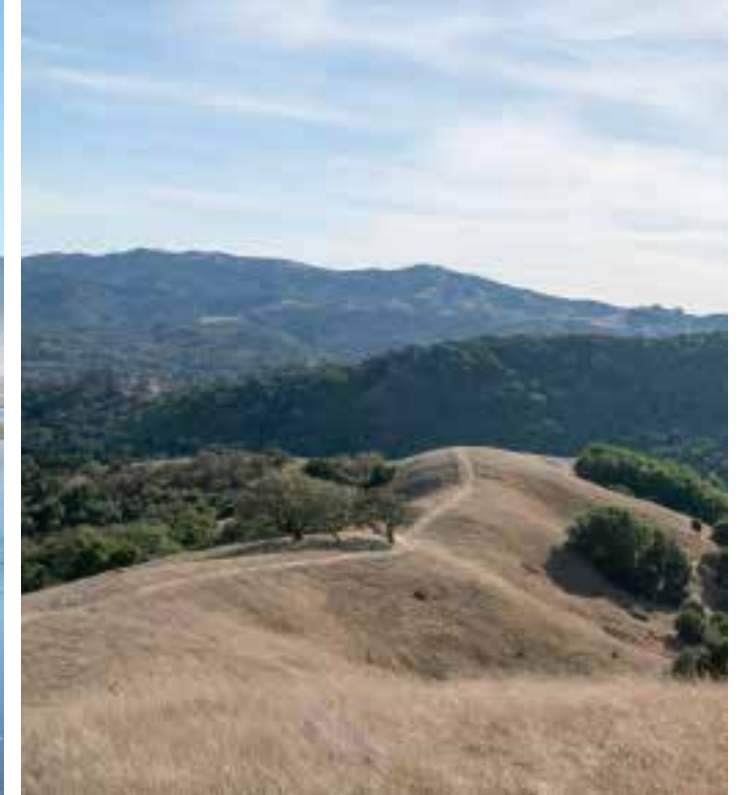
**SEA LEVEL RISE
ADAPTATION**



**BIODIVERSITY
PROTECTION**



**WETLAND
RESTORATION**



**LAND
ACQUISITION**

MEASURE A EXTENSION

MEASURE A FUNDS AT WORK

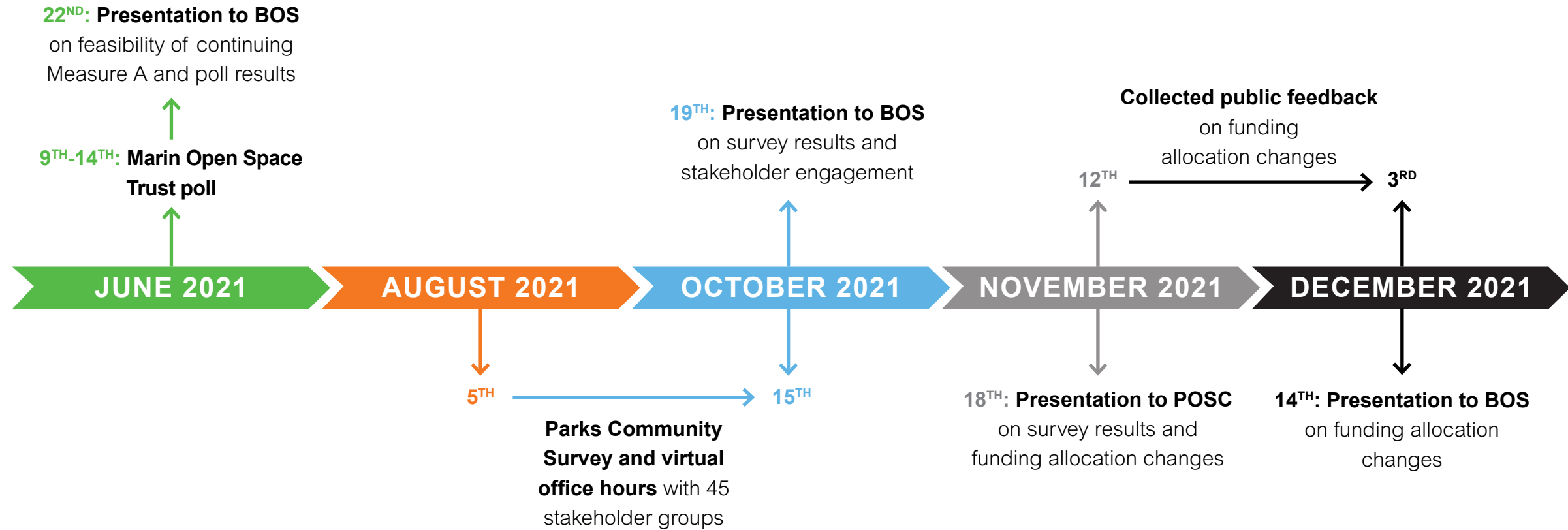


FARMLAND PRESERVATION

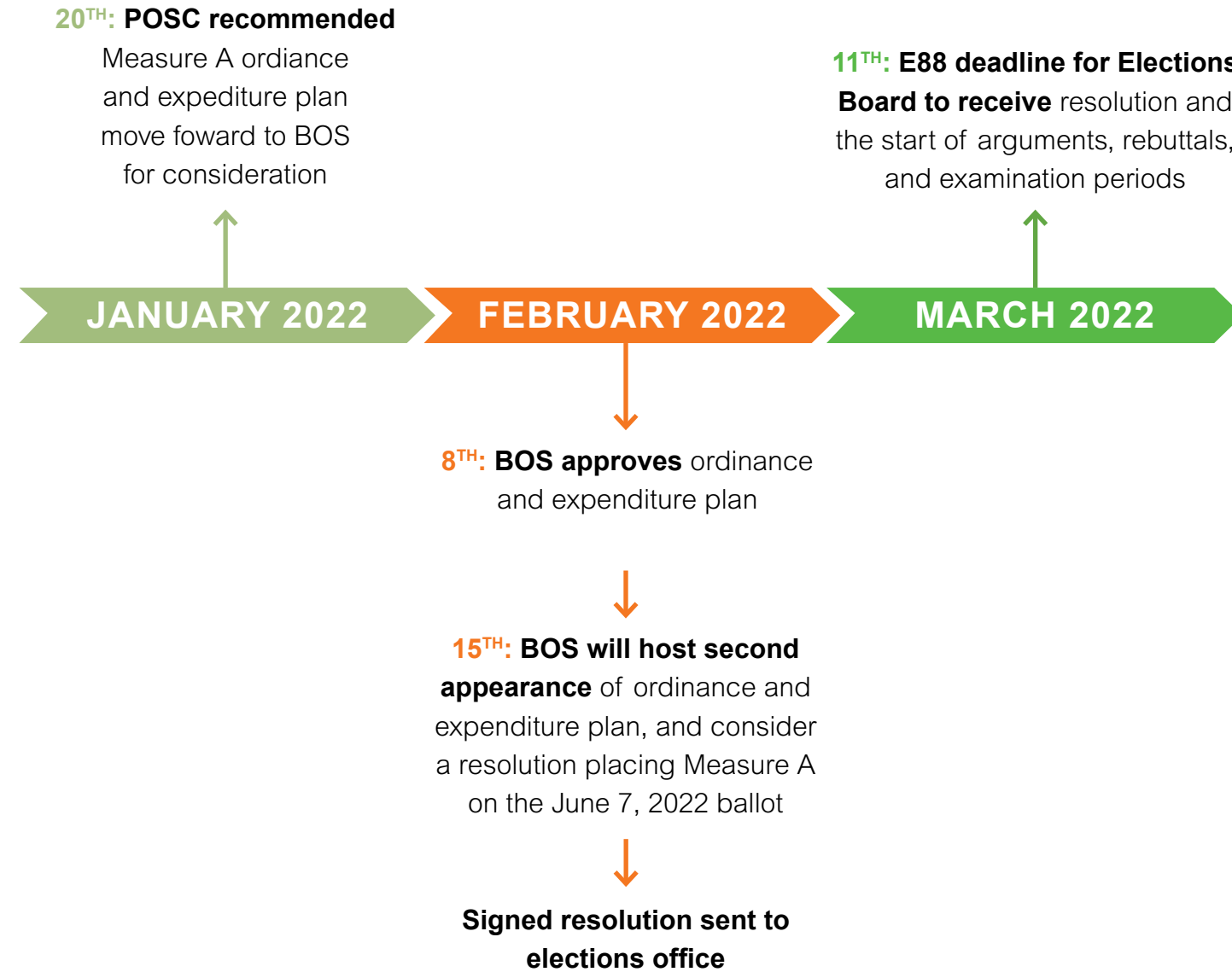


CITY, TOWN, & SPECIAL DISTRICT PARKS

TIMELINE TO DATE 2021



TIMELINE TO DATE 2022



2022 ALLOCATIONS



COUNTY PARKS AND OPEN SPACE

Protect or restore natural resources, maintain existing county parks and open space preserves, and preserve natural lands.



SUSTAINABLE AGRICULTURE

Support and enhance ecosystem services, climate resiliency, and the protection, restoration, and sustainability of Marin County agricultural working lands and food systems.



CITY AND TOWN PARKS

Assist Marin's municipalities and special districts in managing parks, open space preserves, recreation programs, and vegetation to promote biodiversity and reduce wildfire risk.

COUNTY PARKS AND OPEN SPACE 65%



- 65% to protect and restore natural resources and maintain existing county parks and open space preserves, including facilities maintenance and improvements, road and trail management, public engagement and equity, wetland protection and erosion control, natural resources science and research.
- 25% to reduce the risk of wildfire In County parks and open space preserves, via on the ground fuels reduction, while protecting biodiversity and ecosystems.
- 10% for land acquisition or easements that permanently protect, restore, and improve natural areas, streams, bay lands, or native ecosystems with high natural resource values.

SUSTAINABLE AGRICULTURE 20%



- 30% to provide annual competitive matching grants to qualified organizations that support work on sustainable food systems, climate beneficial management, and improving natural resource values on Marin's working lands.
- 20% to provide annual matching grants to the Marin Resource Conservation District for implementing carbon farm plans and similar projects on working agricultural lands to support water quality and soil health, biodiversity, wildlife corridors, riparian zones, erosion control, climate resiliency, and safeguard wildlife habitat and pollinators.
- 50% to support perpetual agricultural easements that protect and permanently preserve Marin County farms and ranches for productive agricultural use.

CITIES AND TOWNS 15%



- Provide grants to cities, towns, and special districts to maintain, restore, or renovate existing parks, preserves, and recreational facilities, construct new parks and recreational facilities, acquire parklands, or engage in vegetation management that reduces wildfire risk, promotes biodiversity, or controls invasive, non-native weeds.

2022 ALLOCATIONS

65% Parks & Open Space

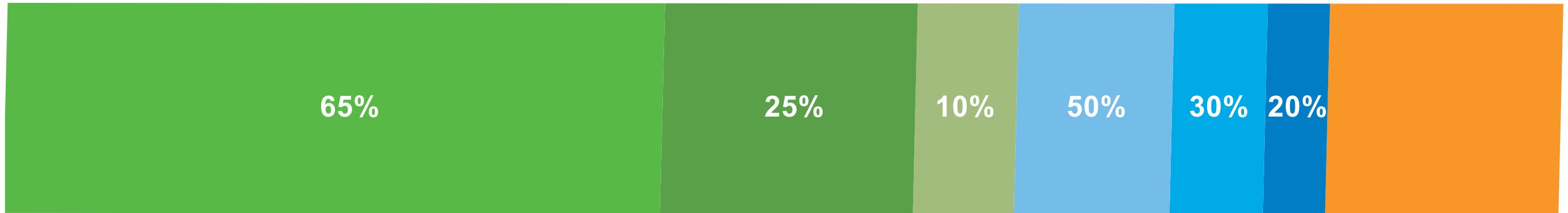
15% Cities & Towns

Protect and restore natural resources and **maintain existing County parks and preserves**

Reduce wildfire risk
In County parks and preserves

Land acquisition

Grants for **cities and towns** parks and recreation



Agricultural conservation easements

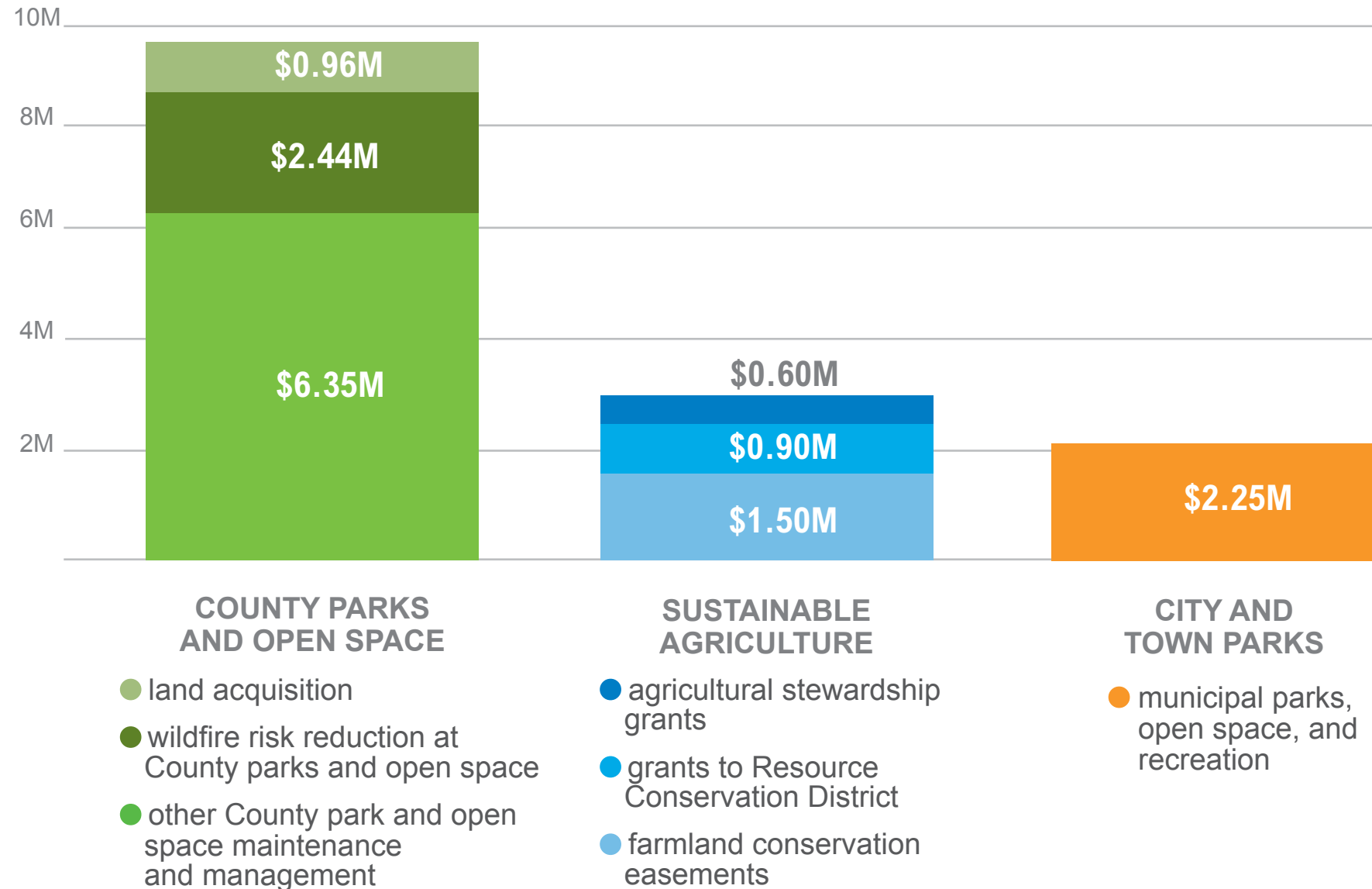
Sustainable agriculture grants

Grants to **Marin Resource Conservation District**

20% Sustainable Agriculture

2022 EXPENDITURE PROJECTION

Based on \$15M annual revenue



ACCOUNTABILITY AND OVERSIGHT



MEASURE A OVERSIGHT
Appointed by the Board of Supervisors, seven committee members oversee Measure A expenditures, assist with compliance audits, and approve this annual report:
Robert Berner
Michael Dybeck
Larry Jennings
Joe Maylan
Daniel Russell
Mary Stompe
Jeff Williams
Each year Measure A funds undergo two compliance audits. The Marin County Department of Finance audited organizations other than Marin County Parks that receive

This table summarizes actual revenues and expenditures handled by Marin County Parks

	PARKS	OPEN SPACE	MEASURE A
REVENUE			
Taxes	0	8,411,346	13,766,114
From Use of Money	407,272	154,599	236,005
Intergovernmental	548,886	33,879	269,709
Charges for Services	1,594,187	(99,009)	0
Miscellaneous	29,341	348,228	833,310
Budgeted Transfer In	1,096,272	3,296,671	0
Total	3,735,658	12,144,717	15,107,257
EXPENDITURES			
Fixed Costs			
- Salaries and Benefits	4,076,973	5,414,887	3,104,979
- Budgeted Transfer Out	15,000	11,000	4,390,943
- Interdepartmental Charges	379,362	864,236	152,226
Grants			
- Other Charges and Capital Assets	1,595,272	3,693,699	0
- Farmland Preservation	0	0	228,068
- Cities and Towns	0	0	2,087,806
Services and Supplies			
- Road and Trail Management	0	845,322	127,924
- Vegetation Management and Fire Fuel Reduction	0	116,823	2,036,739
- Wetland Restoration and Erosion Control	0	61,861	330,846
- Real Estate and Acquisition	0	261,448	17,736
- Park Facilities and Landscape	1,348,310	0	1,364,387
- Public Engagement and Equity	33,812	643,868	477,383
- Science and Research	0	21,242	348,888
- Administration	100,634	233,314	181,163
Total	8,387,372	12,092,437	14,870,143

Marin County Parks Expenditures and Set Aside for Land Acquisition FY 2019-20



Measure A Expenditures and Set Aside for Land Acquisition FY 2019-20



- 5% cap on administrative costs
- Community oversight committee
- Annual independent financial audits

RECOMMENDED ACTIONS



- Adopt Marin Parks, Open Space, and Sustainable Agriculture Transactions and Use Tax Ordinance.
- Adopt resolution calling for an election to submit the above ordinance for approval by the voters in Marin County that re-implements and collects a one-quarter of one percent transactions and use tax for a nine-year period for the purpose of sustaining essential funding to preserve and maintain parks, open space, and sustainable agriculture.

MEASURE A EXTENSION