

**MARIN COUNTY
ENVIRONMENTAL COORDINATION AND REVIEW**

FILING REQUESTED BY AND
WHEN FILED RETURN TO:

**Marin County Parks
Planning and Resources Division
3501 Civic Center Drive, Suite 260
San Rafael, CA 94903**

Attn: James Raives

March 1, 2017

FILED

MAR - 8 2017

**RICHARD N. BENSON
MARIN COUNTY CLERK
BY: O. Lobato, Deputy**




1. **Project Name:** Mount Burdell California Red-legged Frog Pond
2. **Project Location:** Mount Burdell Open Space Preserve, Novato California
3. **Assessor's Parcel** 125-180-58
4. **Project Description:**

The Marin County Open Space District is proposing to construct a pond that will provide breeding habitat for the California red-legged frog and a water source for cattle. The district is proposing to move an existing cattle trough and construct a frog-breeding pond that will also provide a new water source for grazing cattle. The pond will include a spillway and drain pipe that will discharge into a seasonal stream. The spillway will discharge into a grassy swale before entering the creek and the drainpipe will discharge into a rock energy dissipator and only be used to control invasive species.

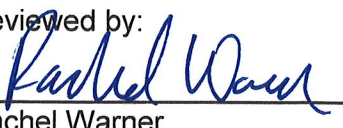
5. **Public Agency Approving Project:** General Manager, Marin County Open Space District
6. **Project Sponsor:** Marin County Open Space District
7. **CEQA Exemption Status:** Class 33, Small Habitat Restoration Projects, CEQA Guidelines Section 15333
8. **Reasons for Exemption:**

The proposed red-legged frog-breeding pond will be approximately 0.5 acre in size, and will affect upland non-native grasslands, avoiding red-legged frog habitat. Additionally, the project site is in natural conditions and is not likely to contain hazardous waste. Neither the California Department of Toxic Substances nor the California State Water Resources Control Board identifies any hazardous waste sites near the project. The project is not likely to have any significant individual or cumulative effects on the environment. It will not be visible from a designated scenic highway and is not likely to disturb any historic or archeological sites.

Project Planner:


James Raives
Open Space Planner
Telephone: (415) 473-3745

Reviewed by:

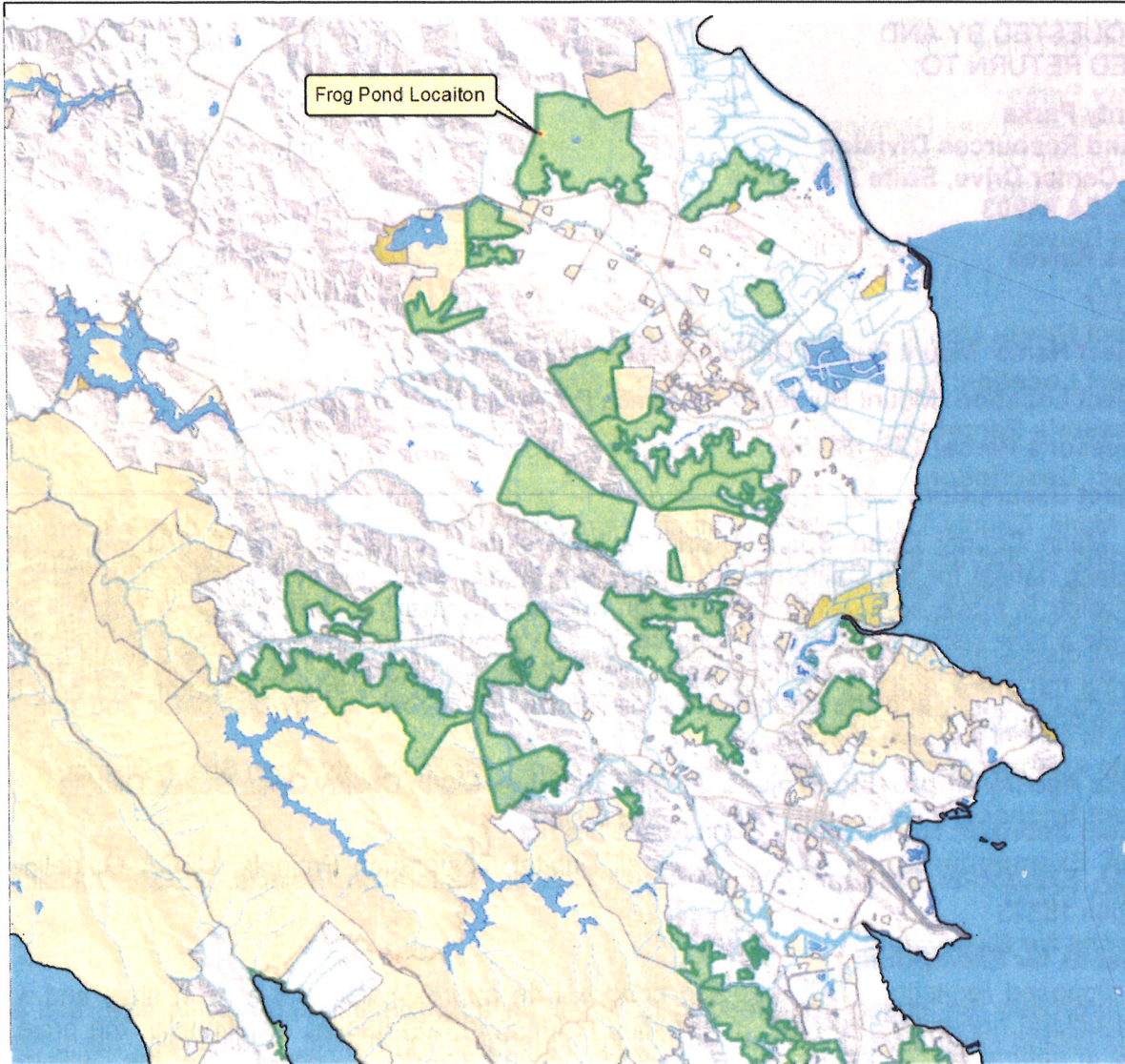

Rachel Warner
Environmental Planning Manager

POSTED 3-8-17 TO 4-7-17




MOUNT BURDELL PRESERVE

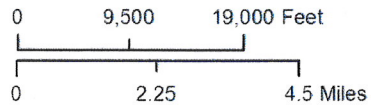
California Red-legged Frog Pond



Document Path: U:\Projects\GIS\Projects\GIS\MapServer4.mxd Date Saved: 2/27/2017 4:21:02 PM User Name: jraives

-  Open Space Preserve
-  Other Public Land
-  Marin County Parks

Property Boundaries are general depictions and are not survey accurate



SEARCH FOR CITY RECORDS